

August



The Business Voice

August 2017

Kick Start the Leader in You - A Leadership Series

With the success of our initial “Kick Start the Leader in You” workshop this past March, the Chamber of Commerce is very pleased to announce the expansion of this workshop into a full series. The “Kick Start the Leader in You – Leadership Series” will expand on the topics of the original workshop and offer a more in-depth examination of the topics that will help develop new supervisors while offering a refresher to others.

The total series is comprised of seven (7) leadership principles. The initial session, a full day session (9 am to 4 pm), introduces multiple characteristics of being a leader and identifies the areas that will be examined in-depth during the instructional series. The additional six (6) sessions are held in the afternoon, each focusing on one facet of being a leader. Series schedule:

Friday, October 13th: 9 am to 4 pm

Friday, October 20th through Friday, December 1st : 1 pm to 4 pm each Friday (no class on Friday, November 24th)

A sampling of the topics to be discussed include: Leadership types, the Herzberg Theory, how to train effectively despite language and cultural differences, how to motivate employees, how to deliver excellent customer service within and outside your organization, managing your time, and Impacting your company and employees and becoming a Community leader, goal setting and SMART goals, the challenge of presence and attention, the benefit and need for goal monitoring, defining direction and developing an action plan, accountability and effective communication.

Each student will receive a certification at completion of the program, MVHR and SHRM learning credits, a workbook to keep after the series, course materials, 2 ½ hour “coaching calls” at the end of the program to be used by the student when needed, a pre-brief and de-brief with each student’s manager to set goals and provide feedback, and access to a private Facebook community leadership group.

Space is limited to the first 15 participants signed up. The cost for the program, including all the materials, is \$500 per student. Call the Chamber of Commerce at 755-2114 with questions or to sign-up your employees.



Featured Member:



Our Vision: Enhanced quality of life for communities, families, and individuals.

What do we believe in? Dignity; Self-sufficiency; Service; Organizational Culture; Quality Performance; Community Participation.

West Central Community Action was established in 1965. We serve 10 counties in Southwest Iowa (Cass, Crawford, Fremont, Harrison, Mills, Monona, Montgomery, Page, Pottawattamie, and Shelby). Our focus is to provide programs and services to low-income, elderly and disabled individuals/families. During 2016, through all of our combined efforts we provided program services or financial assistance that directly impacted 6,927 families, representing 16,361 individuals.

Programs that we sponsor are:

- Child & Adult Care Food Program
- Child Care Resource & Referral
- Family Development & Self-Sufficiency
- Head Start
- Early Head Start
- Low-Income Home Energy Assistance Program
- Senior Community Service Employment Program
- Weatherization
- Women, Infants & Children
- Outreach offices that provide programs such as food pantries, clothing rooms, holiday programs, emergency disaster relief and other programs that meet immediate needs.

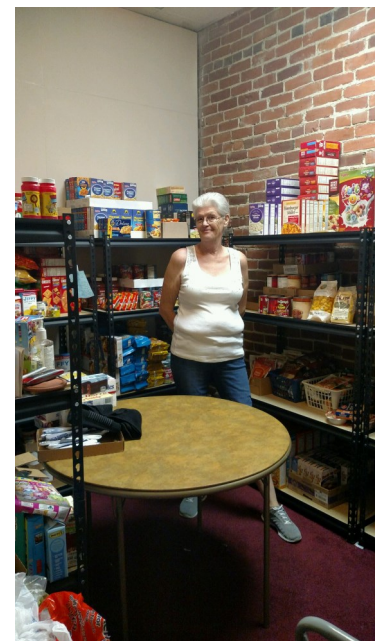
[West Central Community Action](#)

PO Box 709, Harlan, IA 51537 (712) 755-5135

West Central Outreach Clothing Room



West Central Outreach Food Pantry





The Shelby County Chamber of Commerce &
Industry will be closed on Labor Day,
Monday, September 4

Save the Date - Friday, September 22

Bean Bag Tournament, 5:30 pm

Grass Lot behind Molded Products, Harlan

\$20 per team

For more information or to register, call the

Chamber office, 712-755-2114

Article Submissions

We are looking for content from Chamber members about your business that would be interesting to others, providing us with valuable and useful information. Tell us something new or some interesting bit of information about your industry and how to use your products and services.

Articles should be informative, non-promotional, and should not be a commercial intended to steer readers to use your product or service before competitors.

You have a full page, so we are looking for articles of 300 to 500 words. Photos of your business are encouraged. Please submit your article, (we prefer a Word Document) and photos to [Carol](#). Our editorial committee (Todd and Carol) will review all submissions. We reserve the right to edit articles and to schedule them according to the needs of the publication.

Deadline: The second Friday of the month. Please make sure to include your company's contact information.

Welcome New SCCCI Members

8 Ball Aviation Club, Harlan. Joined August 3, 2017

SCCCI Membership Renewals

The Chamber wishes to thank the following members who renewed their membership:

Harlan Veterinary Associates & Referral Services
Kathleen Kohorst Law Firm * Western Iowa Medical
Marne & Elk Horn Telephone Company * Four Seasons Travel
Iowa Agricultural BioFibers * Bauer's Shoe Store
Shelby County Farmers Mutual Insurance Assoc. * David Miller

All Chamber Membership Renewals are sent via email through our website, 30 - 60 days prior to their due date.

You can also renew your membership online via our website.

SCCCI Mission Statement:

To create a climate of opportunity for business growth, economic development, and a high standard of living throughout Shelby County.

Chamber Gift Certificates

The Shelby County Chamber of Commerce & Industry offers gift certificates that are accepted at many of our area's retailers, restaurants and professional services. The program is designed to promote and have consumers patronize Shelby County businesses. They make a perfect gift for employees, coaches, teachers, friends and family. Gift certificates can be purchased in any denomination. There is no minimum purchase required. All major credit cards, checks and cash accepted.

Certificates are easy to purchase. On our [website](#), call the office 712-755-2114, [email](#), or stop by and see us.

Each gift certificate expires after six months from the date of issue.

Upcoming Events

Iowa Community Kitchen, every Tuesday evening, 4 - 6:30 pm
First Baptist Church, Harlan.

FarmTable Procurement & Delivery
Open Warehouse, every Wednesday, Thursday, and Friday, 12 - 4 pm
1901 Hawkeye Avenue, Harlan

Roar into Harlan Bike Night, every third Thursday, May - September, 6 - 9 pm, Historic Harlan Downtown Square.

Elk Horn Farmers Market, every Saturday morning, through September 9 - 11 am, Danish Windmill, Elk Horn.

Brown Bag Lunch Program
Thursday, September 14, 12 - 1 pm
Museum of Danish America, Elk Horn

Shelby County Speedway
25th Annual Tiny Lund Memorial, Friday, September 15 and Saturday, September 16

Blood Drives - Walk-ins Welcome
Thursday, September 21, 12 - 6 pm
St. Boniface Parish Center, 305 Duren St., Westphalia.

Tuesday, September 29, 11:30 am - 5:30 pm, Veteran's Memorial Building, 1104 Morningview, Harlan.

Hike Night at Prairie Rose State Park
Thursday, September 28, 7pm. Meet at the beach parking lot.

Concert Series, at Pioneer Park, Thursday, September 28, 7 - 9 pm. Meet in the west large shelter.

Have a special event coming up? Let us know about it. Contact the Chamber office at 712-755-2114 or [email](#) Carol with your event information.

Contact Us: Give us a call at 712-755-2114 or [email](#) us for more information about becoming a Chamber member.



2017-2018 Opportunity Rates

Website * Newsletter * Social Media

Exploreshelbycounty.com

Website

Front Page Banner:

\$200 per year

Member Directory Page Banner:

\$200 per year

Gift Certificates Page Banner:

\$100 per year

Traffic Catcher Page Sponsor:

\$300 per year

Community Pages Sponsor:

\$100 per year/community

Events Calendar Page Sponsor:

\$300 per year

All Other Pages:

\$50 per year

Limit of 4 Advertisers per page

Monthly Newsletter Advertising

\$25.00 for a half-page advertisement (2 per newsletter)

\$50.00 for a full page advertisement

\$45.00 for a half-page advertisement for non-Chamber members

\$75.00 for a full page advertisement for non-Chamber members

“Did You Know” Weekly Email

Annual Sponsorship: \$500

Chamber Facebook Page

Annual Sponsorship: \$750

1901 Hawkeye Avenue, Suite 101
Harlan, IA 51537

exploreshelbycounty.com

Phone: (712) 755-2114
Fax: (712) 755-2115

Club Level Members

Platinum Plus Club Members

City of Harlan

Harlan Industrial Foundation

Harlan Municipal Utilities

Myrtue Medical Center

Shelby County

Shelby County State Bank

Platinum Club Members

Conductix-Wampfler

Monogram Prepared Meats, LLC

Gold Club Members

Essentia Protein Solutions

FMCTC

Farmers Trust & Savings Bank

Midstates Bank

Silver Club Members

Elm Crest Retirement Community ***Panama Transfer***

Variety Distributors, Inc.

Bronze Club Members

The Agency, Inc. ***All Purpose Contractors, LLC*** ***CDS Global***
Counsel Office & Document ***Cyclone Lanes*** ***Fareway Stores, Inc.***

Harlan Golf & Country Club ***The Harlan Tribune***

Hy-Vee ***Keast Motors*** ***Terry Knapp Real Estate***

KNOD Radio Station ***EJ Leinen - State Farm***

Molded Products ***Nishnabotna Valley REC***

Pitts Family & Sports Chiropractic Center, PC

Smitty Bee Honey, Inc. ***Subway*** ***Town & Country Credit Union***

**2017-2018
Chamber Board
Members**

President
Brent Scheve
The Agency

Vice President
Steve Kenkel
Shelby County Board of
Supervisors

Past President
David Tyrrel
Molded Products

Treasurer
Janell Hansen
Marne & Elk Horn Telephone
Company

Board Member
Josh Grimes
Hy-Vee Stores

Board Member
Tami Kloewer
Secret Serenity Salon
& Day Spa

Board Member
Tim Nauslar
Elm Crest
Retirement Community

Board Member
Darializ Ramos
Monogram Prepared Meats



Museum of Danish America, 2212 Washington Street, Elk Horn, the only national museum dedicated to preserving and promoting Danish culture in America. A place to celebrate Danish roots and American dreams.

4 Seasons Travel, 1119 7th Street, Harlan, is a full service travel agency specializing in leisure and corporate travel.

Baxter Lumber & Hardware, 3105 12th Street, Harlan, serves the community by providing building materials and supplies with fast and friendly service.

Smitty Bee Honey, 208 Main Avenue, Defiance, passionate about producing high quality honey and offers a wide range of sizes and varieties. From the flower to your table.

All Purpose Contractors, LLC, 1132 Larchwood Lane, Harlan, an Iowa-based contracting company offering a variety of services. They specialize in tree care.

Want to find out more about the Shelby County Chamber of Commerce & Industry? Visit our [website](#) and check us out on [Facebook](#) (when you do, make sure to "like us").

Do You Have A New Member To Refer Or Know Anyone Who Has Moved Into The County?

[Email Carol](#)

August Blue Zones Project Recipe

For more recipes, [click here](#).

Cilantro-Walnut Pesto Bread Spread

Ingredients: 2 cups of cilantro; 1 cup fresh spinach; 2-3 T parmesan cheese; 1/2 cup walnuts; 2-3 T olive oil or low sodium broth/bouillon.

Directions:

1. Place all ingredients in a food processor and pulse until smooth.
2. If necessary, add more olive oil or broth to achieve the consistency you want, and to make a spreadable paste.
3. Spread on whole wheat bread and toast in the oven for 4 minutes on broil or toast cycle.

Chamber Staff

Todd Valline
Executive Director

Ed Hendley
Information Technology
Manager

Carol McHugh
Administrative Assistant

Debbie Stendrup
Membership/Events
Coordinator

Event Info

For additional information on community events, please visit our [events calendar](#).

September 2017						
Sun	Mon	Tue	Wed	Thu	Fri	Sat
					1	2 Elk Horn Farmer's Market – Elk Horn
3 5th Annual "Break the Silence" for Nadine Golf Tournament – Shelby Co Golf Course, Harlan	4 Labor Day – Chamber Office Closed	5 Iowa Community Kitchen Meal – Harlan	6 Myrtue Medical Center Blood Analysis Screening – Earling Concerned, Inc 17 th Annual Appreciation Picnic – Harlan	7	8	9 Elk Horn Farmer's Market – Elk Horn 35 th Annual Carstens Farm Days – Shelby
10 Grandparents Day 35 th Annual Carstens Farm Days – Shelby	11 Patriot Day Events Committee Meeting – SCCC Conference Room 13 th Annual Shelby County Women's Conference - Harlan	12 IowaWorks Event Harlan Iowa Community Kitchen Meal – Harlan ESL Class Registration & Assessment – IWCC Harlan	13 Myrtue Medical Center Blood Analysis Screening – Harlan Grief Classes – Myrtue Medical Center, Harlan	14 Brown Bag Lunch Program – Museum of Danish America Elk Horn	15 Shelby County Speedway 25 th Annual Tiny Lund Memorial Harlan	16 Elk Horn Farmer's Market – Elk Horn Shelby County Speedway 25 th Annual Tiny Lund Memorial Harlan
17 Concerned Inc. Golf Tournament – HGCC, Harlan	18	19 SCCC Board Meeting Iowa Community Kitchen Meal – Harlan	20 Myrtue Medical Center Blood Analysis Screening – Shelby Grief Classes – Myrtue Medical Center, Harlan	21 Blood Drive – St. Boniface Parish Center Westphalia Roar into Harlan Bike Night - Harlan	22 Autumn Equinox Bean Bag Tournament – Harlan	23 Elk Horn Farmer's Market – Elk Horn
24	25	26 Blood Drive – Veteran's Memorial Building, Harlan Iowa Community Kitchen Meal – Harlan	27 Myrtue Medical Center Blood Analysis Screening – Elk Horn	28 Hike Night at Prairie Rose - Harlan Pioneer Park Concert Series - Harlan	29	30 Elk Horn Farmer's Market – Elk Horn

October 2017						
Sun	Mon	Tue	Wed	Thu	Fri	Sat
1	2 Blood Drive – Irwin Community Building Irwin	3 Iowa Community Kitchen Meal – Harlan ESL Class Registration & Assessment – IWCC Harlan	4 Grief Classes – Myrtue Medical Center, Harlan	5	6	7
8	9 Columbus Day Events Committee Meeting – SCCC Conference Room	10 Iowa Community Kitchen Meal – Harlan	11 Grief Classes – Myrtue Medical Center, Harlan	12	13	14
15	16	17 SCCC Board Meeting Iowa Community Kitchen Meal – Harlan	18 Grief Classes – Myrtue Medical Center, Harlan	19 Brown Bag Lunch – Museum of Danish America, Elk Horn	20	21
22	23	24 United Nations Day Iowa Community Kitchen Meal – Harlan	25 Grief Classes – Myrtue Medical Center, Harlan	26	27	28 Harvest Fest - Harlan
29	30	31 Halloween Iowa Community Kitchen Meal – Harlan				