

January 2020

2020 Annual Awards Banquet

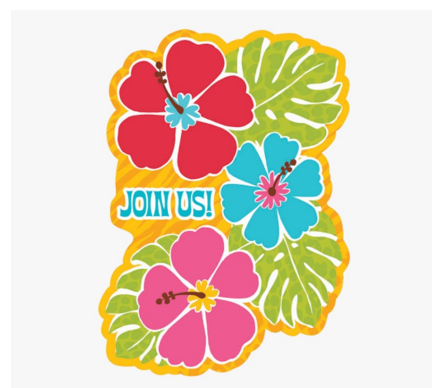


Aloha! Get ready for a night of great dining, fun, and our 2020 Annual Awards Banquet. This year's banquet is scheduled for Friday, February 28 at the C.G. Therkildsen Center, 706 Victoria Street, Harlan. Our theme is "Hawaiian Luau". Hawaiian apparel is not required but encouraged. There will be a prize given to the most "colorful" Hawaiian shirt/outfit, so be creative.

Doors open at 5:00 pm, with the banquet beginning at 5:30 pm with networking and cash bar. At 6:00 pm, our catered meal will be served. After dinner its game time: 50/50 Heads or Tails and Generational Trivia, followed by the awards ceremony. During this time, the Shelby County Chamber of Commerce & Industry will unveil award winners from the following categories: Citizen/Volunteer of the Year, Non-Profit of the Year, New Business of the Year, and Business of the Year.

In keeping with tradition, we will hold a live auction, immediately after the awards ceremony. Silent auction items will be available for bidding throughout the evening.

Cost to attend this year's Chamber banquet will be as follows: \$30 per person, tables of 8 are \$240. **Reservations are required** and can be made by contacting the Shelby County Chamber of Commerce & Industry at 712-755-2114 or by [email](#) by Friday, February 21, 2020.



Welcome New SCCCI Members

REM Iowa. Joined December 24, 2019

SCCCI Membership Renewals

The Chamber wishes to thank the following members who renewed their membership in November, December, and January :

Panama Transfer * Counsel Office & Document * Town & Country Credit Union
Camblin Plumbing & Heating * FMCTC * Leah Marie Photography * Harlan Pizza Ranch
Baxter Lumber & Hardware * Gute Tree Service, Inc. * Monogram Prepared Meats
Pleasant Thymes Tea Room * Conductix - Wampfler * Iowa Western Community College
Midwest Automotive Repair * Myrtue Medica Center * Casey's General Store
Pitts Family & Sports Chiropractic, P.C. * Secret Serenity Salon & Spa
Floral Elegance & 6th Street Emporium * Osborn Auction, LLC
Midstates Bank * Knights of Columbus - Council 3900 * due North, LLC
Potter House Bed & Breakfast * LightBox Systems * United Bank of Iowa
Kirk Petersen Certified Appraisal Services * The Kringle Man Pastries * Shelby County Fair Corp

**All Chamber Membership Renewals
Are Sent Electronically Through Our Website,
30 - 60 Days Prior To Their Due Date. You Can Also
Renew Your Membership Online Via Our Website.**

Legislative Coffee Series

Saturday, February 15, 10 am. Hosted and sponsored by
Hansen House Assisted Living
703 Dye Street, Harlan

Saturday, March 21, 10 am. Hosted and sponsored by
Conductix - Wampfler
1605 Industrial Parkway, Harlan

Saturday, April 18, 10 am. Hosted and sponsored by
Harlan Sweets & Treats
1004 6th Street, Harlan



Club Level Members

Platinum Plus Club Members

City of Harlan

Harlan Industrial Foundation

Harlan Municipal Utilities

Myrtue Medical Center

Shelby County

Shelby County State Bank

Platinum Club Members

Conductix-Wampfler

Monogram Prepared Meats, LLC

Gold Club Members

The Agency, Inc. Essentia Protein Solutions FMCTC

Farmers Trust & Savings Bank Midstates Bank

Silver Club Members

Elm Crest Senior Living Community Panama Transfer

Variety Distributors, Inc. Markham Family Dental Associates, Inc.

Bronze Club Members

All Purpose Contractors, LLC CDS Global Counsel Office & Document

Cyclone Lanes Fareway Stores, Inc. Harlan Golf & Country Club

Harlan Sweets & Treats The Harlan Tribune Hy-Vee

Keast Motors Terry Knapp Real Estate KNOD Radio Station

EJ Leinen - State Farm Molded Products

Nishnabotna Valley REC Pitts Family & Sports Chiropractic Center, PC

Smitty Bee Honey, Inc. Subway Town & Country Credit Union

Calendar Highlights

Tuesday, February 4, 6:30 - 8:30 pm. Ladies Night Out - Galentine's Day Addition, Shelby County ISU Extension & Outreach, Harlan. Come learn all about the Cricut Cutting Machine while making your own Galentine Crafts to take home. Cost is \$10, which includes all materials. Feel free to bring your own machine or use the Extension's. Space is limited, pre-registration is required by calling 712-755-6104,

Saturday, February 8, 5 - 7 pm. Shelby's Annual Soup Cook-Off, Cardinal Lofts Gym, Shelby. Pre-affle tickets available at Shelby County State Bank. \$1/ticket, \$5/six tickets. Adults: \$6, 5-12: \$3, under age 5: free.

Sunday, February 16, 2 pm. Animal Anti-freeze, Prairie Rose State Park, Harlan. Please meet at the park office.

Monday, February 17. The Shelby County Chamber of Commerce & Industry will be closed in observance of President's Day.

Monday, February 17, 5 - 6:30 pm. Mobile Food Pantry, Veteran's Memorial Building, Harlan.

Chamber Gift Certificates

The Shelby County Chamber of Commerce & Industry offers gift certificates that are accepted at many of our area's retailers, restaurants, and professional services. The program is designed to promote and have consumers patronize Shelby County businesses. They make perfect gifts for employees, teachers, coaches, friends, and family. Gift certificates can be purchased in any denomination. There is no minimum purchase required. All major credit cards, checks, and cash accepted.

Certificates are easy to purchase. On our [website](#), call the office 712-755-2114, [email](#) or stop by and see us.

SCCCI Mission Statement: To create a climate of opportunity for business growth, economic development, and a high standard of living throughout Shelby County.

2019-2020 Board of Directors

President

Josh Grimes
Hy-Vee Stores

Vice President

Ellen Walsh-Rosmann
FarmTable Delivery &
Milk & Honey

Treasurer

Gervas Mgonja
Town & Country Credit
Union

Past President

Steve Kenkel
Shelby County Board of
Supervisors

Board Member

Steve Ineson
Four Seasons Travel

Board Member

Doug Schmitz
Smitty Bee Honey

Board Member

Sheri Tyrrel
Molded Products

Board Member

Connie Wees
Bank of the West

Chamber Team

Todd Valline

Executive Director

Carol McHugh

Administrative Assistant

Debbie Stendrup

Membership/Events
Coordinator

Ambassador Visits and Ribbon Cutting Ceremonies



Ribbon Cutting Ceremony
Rustic Roots Salon, Elk Horn
November 30, 2019



Ambassador Visit
Shelby County ISU Extension & Outreach, Harlan
December 6, 2019



Ambassador Visit
FarmTable Procurement & Delivery, Harlan
December 13, 2019



Ambassador Visit/Ribbon Cutting Ceremony
Farm Credit Services, Harlan
December 18, 2019



Open House/Ribbon Cutting Ceremony
The Old Harlan Library, Harlan
January 14, 2020



Senior Life Solutions
Myrtue Medica Center
Lower Level
Clinic Entrance
1220 Chatburn Avenue
Harlan

Wednesday, February 5
Open House: 2 - 3 pm; Ribbon Cutting: 2:15 pm

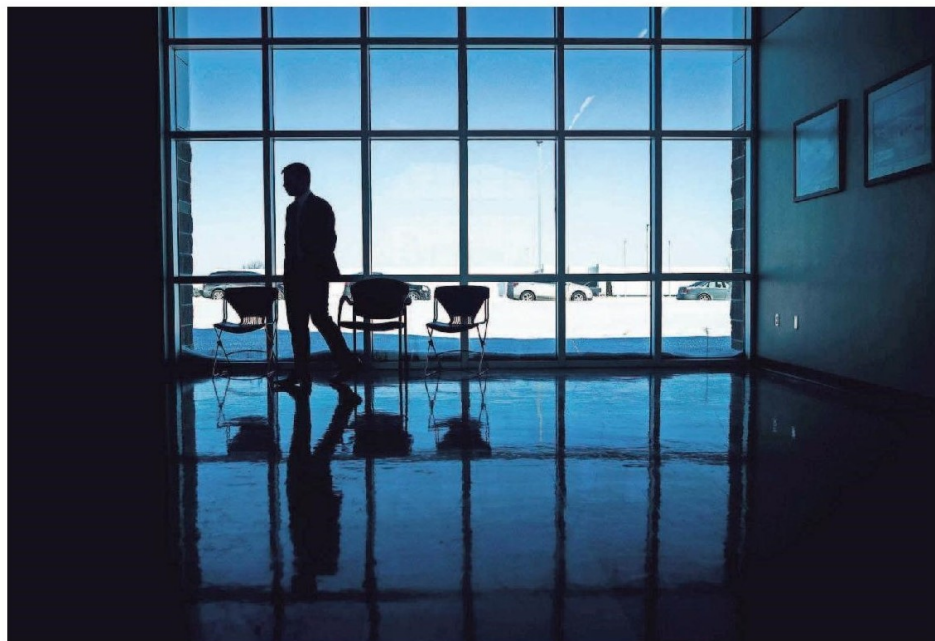
Hosting an ambassador visit, open house, or ribbon cutting ceremony is a great opportunity to create public awareness about your business. For more information, contact the Shelby County Chamber of Commerce & Industry at 712-755-2114 or email [Carol](#) or [Debbie](#).

Presidential Candidate Mayor Pete Buttigieg was in Harlan, Saturday, January 18, for a town hall meeting held in the Shelby County Chamber of Commerce & Industry's Atrium. We would like to thank Pete Buttigieg's team and to everyone who attended this event.

Photos courtesy of Kelsey Kremer of The Des Moines Register.



2:46 p.m., Harlan — Pete Buttigieg meets campaign volunteer Vikki O'Hara of Council Bluffs and her 2-year-old Dachshund, Gemma, before holding a town hall.
KELSEY KREMER/
THE REGISTER



2:57 p.m., Harlan — Pete Buttigieg paces as he listens to U.S. Rep. Anthony Brown, a Democrat who represents Maryland's 4th District, introduce him before a town hall. It's one of the rare moments of the day where Buttigieg is almost alone in public. KELSEY KREMER/THE REGISTER



Pete Buttigieg speaks to a standing-room-only crowd during a town hall on Saturday in Harlan. KELSEY KREMER/DES MOINES REGISTER

Event Info

February 2020

Sun	Mon	Tue	Wed	Thu	Fri	Sat
						1
2 Groundhog Day	3 Cyber Security Shelby Co State Bank Harlan GriefShare Seminar/Support Group First Baptist Church Harlan Seeds of Hope Support Group, SCCO, Harlan	4 Iowa Community Kitchen, First Baptist Church, Harlan Ladies Night Out Galentines Day Addition, SC Extension & Outreach	5 Events Committee Meeting, SCCCI Conference Room Open House & Ribbon Cutting Ceremony for Senior Life Solutions, MMC Lower Level Chatburn entrance Harlan	6 Murder Mystery Event, Harlan Community Library	7	8 Blood Drive, Shelby Community Building Shelby Annual Soup Cook-Off, Cardinal Lofts Gym, Shelby Full Moon Hike or Snowshoeing, Prairie Rose State Park, Harlan
9	10 GriefShare Seminar/Support Group, First Baptist Church, Harlan Personal Development Book Club, Elk Horn Library Seeds of Hope Support Group, SCCO, Harlan	11 Blood Drive CDS Harlan Iowa Community Kitchen, First Baptist Church, Harlan	12 Blood Analysis Screening, MMC Harlan Blood Drive Harlan Community High School, Harlan President Lincoln and Dinner, Pleasant Thymes Tea Room Elk Horn	13	14 Valentine's Day Valentine's Day Prix Fixe, Milk & Honey Harlan Valentine's Day Banquet, Pleasant Thymes Tea Room Elk Horn	15 Legislative Coffee Series, hosted by Hansen House Assisted Living Harlan
16 Animal Antifreeze Prairie Rose State Park Harlan	17 President' Day Chamber office closed Mobile Food Pantry Vet's, Harlan GriefShare Seminar/Support Group First Baptist Church Harlan Seeds of Hope Support Group, SCCO, Harlan	18 Iowa Community Kitchen, First Baptist Church, Harlan	19 Blood Analysis Screening, MMC Harlan	20	21	22 Dazzling Divas Steak Dinner, Live Auction & Dance, St. Mary's Parish Hall, Panama
23	24 GriefShare Seminar/Support Group, First Baptist Church, Harlan Seeds of Hope Support Group, SCCO, Harlan Personal Development Book Club, Elk Horn Library	25 Iowa Community Kitchen, First Baptist Church, Harlan	26 Blood Analysis Screening, MMC Harlan	27	28 SCCCI Annual Awards Banquet C.G. Therkildsen Center, Harlan	29

March 2020

Sun	Mon	Tue	Wed	Thu	Fri	Sat
1	2 GriefShare Seminar/Support Group, First Baptist Church, Harlan Seeds of Hope Support Group, SCCO, Harlan	3 Iowa Community Kitchen, First Baptist Church, Harlan	4 Blood Analysis Screening, MMC Harlan	5	6	7
8	9 GriefShare Seminar/Support Group, First Baptist Church, Harlan Seeds of Hope Support Group, SCCO, Harlan Personal Development Book Club, Elk Horn Library	10 Iowa Community Kitchen, First Baptist Church, Harlan	11	12	13	14 Pine Cone Bird Feeders, Prairie Rose State Park, Harlan St. Patrick's Day Irish Dinner, Pleasant Thymes Tea Room Elk Horn
15	16 GriefShare Seminar/Support Group, First Baptist Church, Harlan Seeds of Hope Support Group, SCCO, Harlan	17 St. Patrick's Day Iowa Community Kitchen, First Baptist Church, Harlan	18 Blood Analysis Screening, Irwin Community Building Irwin	19	20 Stargazing Prairie Rose State Park Harlan	21 Legislative Coffee Series, hosted by Conductix - Wampfler Harlan
22	23 GriefShare Seminar/Support Group, First Baptist Church, Harlan Seeds of Hope Support Group, SCCO, Harlan Personal Development Book Club, Elk Horn Library	24 Iowa Community Kitchen, First Baptist Church, Harlan	25	26	27	28 34th Annual Harlan Newspapers Home, Garden and Living Show, Vet's Harlan
29	30 Seeds of Hope Support Group, SCCO, Harlan	31 Iowa Community Kitchen, First Baptist Church, Harlan				